



Keith Tushek
Safety Supervisor



Top 10 - Yard Work Safety Tips

The summer season is the perfect time and weather to spend outside keeping your yard and outdoor spaces in tip-top shape. In addition to staying hydrated, here's a list that can help you avoid a trip to the emergency room.

1- Know your equipment. Before operating new lawn mower equipment, read the owner's manual .

2- Practice Ladder Safety. Always check to make sure your ladder is firmly set on a level surface. Never set ladders on boxes or other objects to make the ladder reach higher areas. Lock or barricade any doors that may open toward ladders. Also, never stand on the top rung or step of a ladder – your balance could be jeopardized.

3- Watch your children. Every year, thousands of children nationwide are injured by lawn-care tools. Keep small children inside while you're mowing or trimming and do not take children on rides with a riding mower.

4- Check your extension cords. Before use, check your extension cords for cracks. If you find any frayed wires, replace the cord. And remember, never run extension cords through puddles.

5- Protect your body. This one is simple: wear protective gear. We all know that lawnmowers hit rocks, sticks and other items that can be turned into flying projectiles. Wear long pants to protect your legs from flying objects and wear non-slip, closed toe shoes instead of sandals. Don't forget your eyes and ears! Sunglasses will protect you from sun and earplugs can eliminate loud noises from machinery that could cause a substantial amount of hearing loss.

6- Store tools and materials in safe places. A range of injuries can be caused by stepping on, landing on or being hit with garden tools like shovels, rakes and trowels. Do not use these tools when in close proximity to children. When not in use, store them in safe, enclosed areas. If you have small children or pets, weed killer or lawn fertilizer can be deadly. Seal bags and store at heights where small children cannot get into potentially harmful materials.

7- Don't dig without approval. Check with your local utility companies before you dig trenches, holes or any other cavity in your yard. You do not want to be responsible for accidentally hitting gas, electrical or sewer lines – the results of which can be extremely hazardous, not to mention expensive.

8- Be conscious of electricity. Don't leave electrical tools plugged in while not in use. When ready to use a tool, make sure equipment is in the off position before you plug it in.

9- Get green smart. Before you or your children do any "hands on" weed removal, be sure you know how to identify poison ivy, oak, and similar toxic plants. Find out ahead of time how to treat the rashes they cause to reduce the irritation.

10- Be Smart. It's obvious. Never operate lawn machinery or use heavy garden tools while under the influence of drugs or alcohol.



Local 14 Elections

Tues. July 28th / Wed. July 29th
6a.m. to 6a.m.

Auditorium outside action center
**Don't Forget Get Out
and VOTE !!**

**East Gate Alexis Rd
inbound turnstiles will
be closed from
Saturday 7/25 3:30am
to Sunday 7/26 7:00pm**

West Gate Jackman Rd will be open all weekend

East Gate Outbound turnstiles will be open all weekend



IN MEMORY

Our deepest
sympathy to
the family of:

Barry Steven Butts

Dept AB1V

E Clutch Sub Assy

35 years

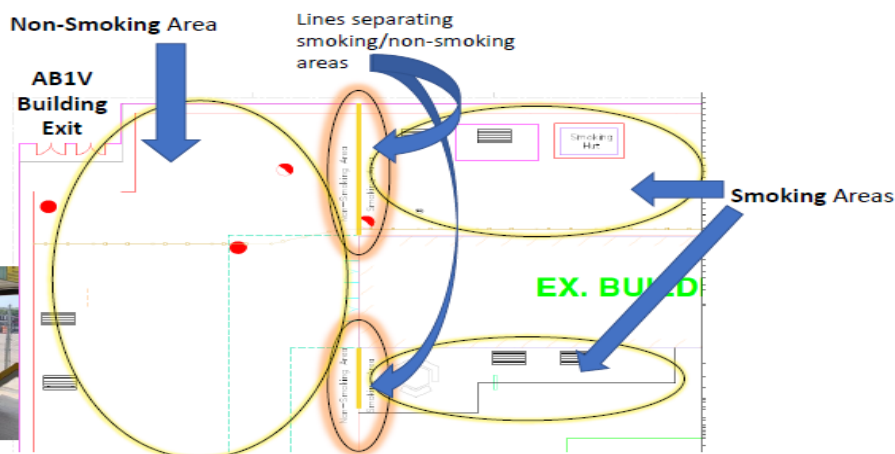
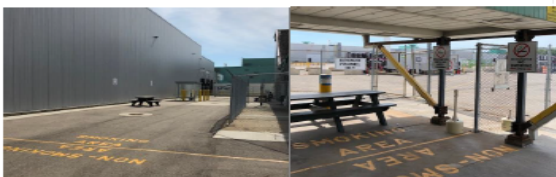
Beloved coworker, Husband and
Father.

SUBSCRIBE NOW!

To get the POWERline delivered to your email 2x's or more a month email; robert.boscoii@gm.com or by contacting your leader.

Update: Effective Immediately

The designated smoking/non-smoking areas have been changed at the West Gate outside break areas. There is a painted line (noted in picture) that separates the smoking/non-smoking areas. The reason for the change is so that non-smokers can exit the facility to the turnstiles without walking through the smoking area to do so.



Live values that return people home safely.
EVERY Person. EVERY Site. EVERY Day.



TTO SMOKING POLICY

Pursuant to the provisions of the Ohio State law, please be reminded smoking is only allowed in designated outdoor areas that meet the specific requirements set forth by the Ohio State Law ORC 3794.01. To help accelerate our compliance with the Ohio State Law we remind you of the following:

- No Smoking inside any TTO building (to include all plant and office areas), outbuildings, docks and storage areas.
- No use of smokeless cigarettes inside any of the TTO buildings (to include plant and office areas), outbuildings, docks and storage areas.

The TTO smoking policy allows for smoking as follows:

- Smoking is permitted in or near all of the TTO designated smoking shelters
- Smoking is not permitted in areas where it may be offensive to other TTO Members, such as outside of entrances and exits into the facility and turnstile gates
- Smokers **MUST** be outside of any building, and a distance away from the entrances to prevent smoke from entering the building

QUALITY CORNER

Question: What color markings are used on the floor for the nonconforming parts area? **Answer: Yellow**

This Day In History

On **July 23, 1999**, space shuttle Columbia blasted off with the world's most powerful X-ray telescope and Eileen Collins, the first woman to command a U.S. space flight.

PURPOSE

To provide a healthy and safe work environment that also ensures the quality of TTO products by minimizing potential concerns caused by smoking in the plant.

SCOPE

This policy applies to all TTO Team Members and visitors while on GM property. Persons observed by management to be in violation of this policy may be subject to disciplinary action.

NOTE: There have been several instances recently where residue from smokeless tobacco (chewing tobacco) has been found on parts and transmissions. We are asking all employees to cooperate in maintaining the high standards we adhere to in regards to sediment, or any foreign materials that would cause issues of contamination, failure and uncleanliness to our products.

KEY POINTS

GM recognizes an individual's right to decide personal smoking behavior. It is GM's policy, however, to make reasonable efforts to protect nonsmokers from the health risks of involuntary exposure to environmental tobacco smoke while in the workplace.

Additionally, smoking in work areas presents serious product quality concerns. Therefore, smoking is prohibited as defined above.

The ban on smoking in plants does include smokeless cigarettes. Following consultation with Legal, Medical and Health & Safety, all support a prohibition on the use of these cigarettes.

The FDA, Medical and Health communities continue to investigate and debate the health factors of these cigarettes, so we do not have clear direction from them as to the health aspect.

The Workplace of Choice Pulse Survey is Live!

July 22 – 28

Participation is 100% voluntary and confidential.

It should take less than 10 minutes to complete.

Feedback on specific topics including employee engagement, communications, safety and recognition.



How to contact us...

UAW Communications Liaison: Robert A. Bosco II

Email submissions to robert.boscoii@gm.com

Phone: 989-245-4338

Member LUCA Local Union Communication Association

Deadline for POWERLine is 3:00 p.m. Tuesday.

2020 General Motors Company, GPS TTO. All rights reserved.

